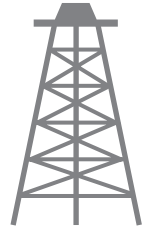




# Pacific Petroleum Geology



NEWSLETTER

Pacific Section • American Association of Petroleum Geologists

July and August 2024

## Register Now for Two September Events!

**100th Anniversary Meeting and Field Trip  
Host: Los Angeles Basin Geological Society**



**September 13-15, 2024  
Whittier, California**

**See Page 6 for registration  
information**

---

**San Joaquin Geological Society  
Annual Fall Fiesta and Scholarship Fundraiser**



**Friday September 20, 2024  
Bakersfield, California**

**See Page 11 for registration  
information**

# PACIFIC PETROLEUM GEOLOGIST

## NEWS LETTER OF THE PACIFIC SECTION AMERICAN ASSOCIATION OF PETROLEUM GEOLOGISTS

Volume 1

January 1947

Number 1.

### GREETINGS!

This is the first issue of an information sheet which the officers wish to send to all members of the Pacific Section periodically, in the hope that it will serve as a medium of establishing a closer contact between members of the Section. The obstacles imposed by geography and the demands of their profession have prevented many of our members from enjoying a full participation in the activities of the association. Probably less than half have been so situated as to attend, with any degree of regularity, the monthly luncheons, meetings featuring distinguished lecturers, meetings of the Geological Forum, study group meetings, field trips, picnics, and other activities.

In the past, it has been difficult to do much about this problem, but our membership is constantly growing, and the present officers believe the time has come when we can undertake this additional service to our members. In doing so, we may also attract others into the organization who have wondered, "What would I get for my two dollars?"

This is frankly an experiment. The only way we can find out whether or not you like it is to have your expressions of approval or disapproval. We will also welcome your suggestions for improving this publication. Please do not hesitate to express yourselves freely, and we will be guided by the reactions we get.

The present issue does not necessarily indicate what you may expect in the future. Like any other enterprise, to be worth-while, it should continue to grow and improve. Contributions of information that can be published are eagerly desired. The more of these, the more representative of the association this sheet will be. Use it to air your views on association matters. The officers, on the other hand, will use it to ask your opinions.

If our present intentions are carried out, this bulletin will contain information of enough value to make it worth filing; hence do not throw this one away.

Martin Van Couvering  
Pres., Pacific Section, A.A.P.G.

### INTRODUCTION

PACIFIC PETROLEUM GEOLOGIST comes to you as an innovation in the life of the Pacific Section of A.A.P.G. Elsewhere on this page President Martin Van Couvering has written a Foreword, setting forth the fundamental thoughts leading up to this undertaking and expressing a hope for the service that it may render to the members of our organization. The Editorial Staff grasps this, its first opportunity to acknowledge our genial President as the sole "parent of record" of this infant undertaking. True, the Staff assisted in the final stages, as a good Staff should, and no little praise belongs to them, but this does not detract from the fact that the President conceived the notion of this news letter and then gave freely of his energy and time from gainful pursuits to alone nurture this issue to very near its present stature. Only time and your reaction will tell the extent to which the value of membership in our organization has been enhanced by this first step.

The basic purpose in Pacific Petroleum Geologist is to inform, to keep in-touch those who would otherwise be out-of-touch, to make membership in our Section and Association so attractive professionally and socially that no reasonable doubt can be entertained as to the advantages of new or continued membership. The members of the Editorial Staff believe the job to be big and the purpose worthy and have volunteered their time and abilities toward the success of the venture. It is fitting, therefore, that the first issue should contain introductions to the Staff and to the department to be handled by each.

The Calendar is in the able hands of Richard S. Ballantyne, Jr. It is hoped that each issue will contain a complete calendar of all meetings and other events scheduled by any of the technical societies in which our members may be interested. These will include A.A.P.G., A.I.M.E., A.P.I., S.E.G., S.E.P.M., G.S.A., San Joaquin Geological Society, etc.

Activities of the Pacific Section and particularly the progress of committee work will be reported regularly by John E. Kilkenny. Prior to the National Convention in March space will be found for similar reports of National activities, for lists of National Officers, Committees and Committee Members. A future issue may contain a roster of Pacific Section members arranged by company affiliation.

Prominent space in each issue is reserved for Personal Items, edited by Peter E. Gardett. In no sense a "Society Editor", Pete wants personal news of promotions, transfers, resignations, professional contributions, births, marriages, deaths and other happenings of a personal nature. The help of each member is solicited in keeping this department supplied. To the member who is out-of-touch: Your friends will be happy to hear from you, too, so write! Pete also is designated to receive and dispose of comments from the members. Since this publication is just learning to crawl, a great deal of development is anticipated, and all ideas for improvement will be welcome.

Each issue will contain a Selected Bibliography of Recent Publications prepared under the direction of Robert T. White. This will include books, professional papers and bulletins, technical and non-technical articles in the trade magazines, maps and other items of interest to our membership.

To facilitate the gathering of news and the handling of other matters in the San Joaquin Valley area Herman W. Woddis has been chosen District Representative. He will be glad to hear from you, even if you come laden with complaints.

Last, but not least, a publication must be assembled, printed, addressed and mailed and this very considerable job has been undertaken by Hugh W. McClellan. After photographic reduction the printing will be by the Rototype process, which also permits reproduction of line sketches, maps, and even hand-written copy, should the occasion arise. It is expected that news items and special subjects may from time to time be so illustrated. Adequate left-hand margin is provided for binding or filing, since the Pacific Petroleum Geologist will prove to be valuable as a reference file.

Each time you contribute, whether news items, criticism or special article, remember the deadline is the tenth of each month.

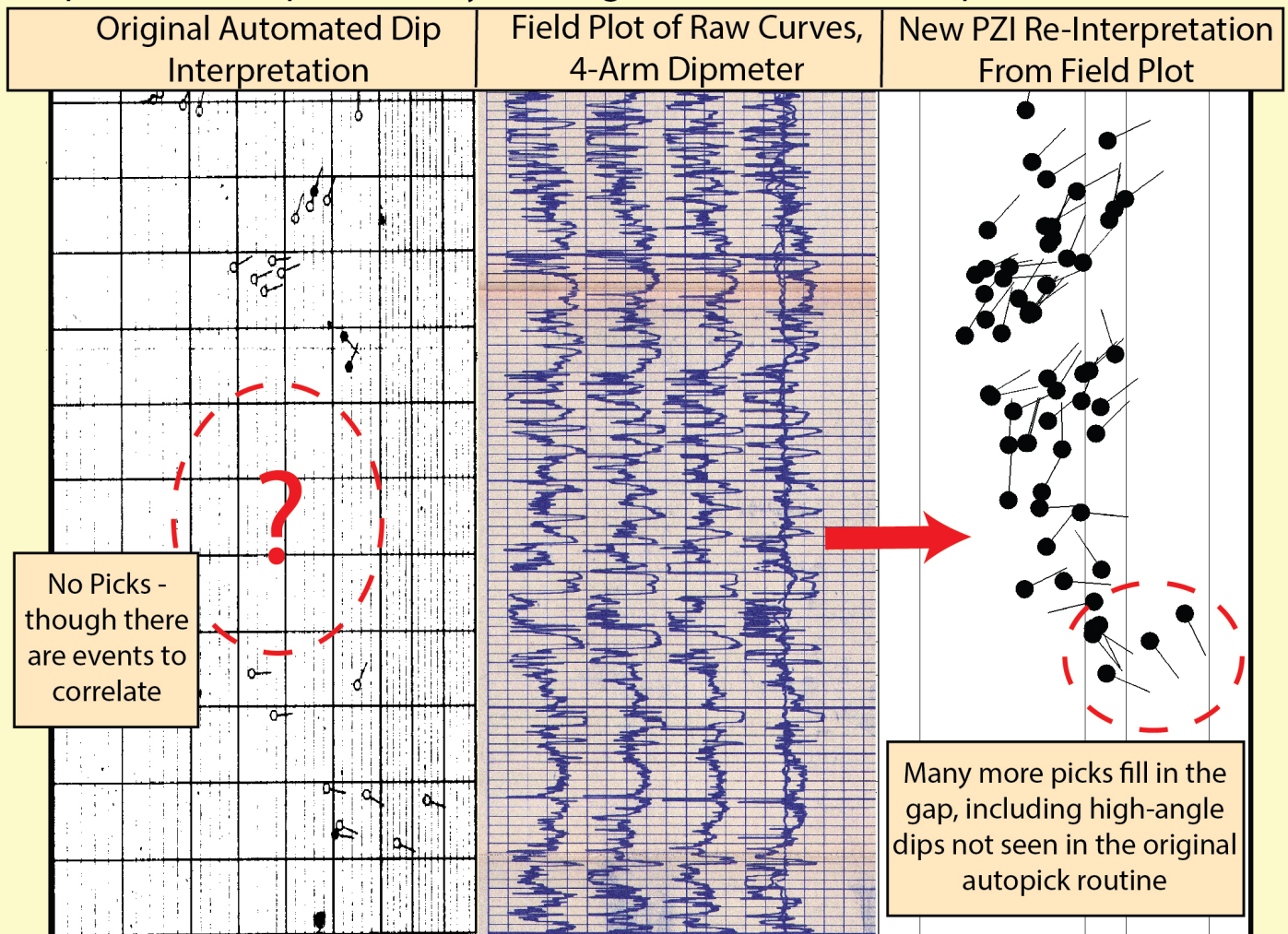
--Loyde H. Metzner

Reprinted from C. F. Green, ed., 1985, 62 years history of the Pacific Section American Association of Petroleum Geologists, publication MP 36.

- Reservoir characterization, geology, and petrophysics, logs of all ages
- Specializing in problem-solving and difficult reservoir questions
- 40+ years of experience in California oilfields
- Training in log analysis and field studies - customized private courses and mentoring available
- Image log and dipmeter interpretation and analysis

### Featured Service: Dipmeter Log Resurrection

In geologically complex areas, it isn't always possible to obtain new image logs for structural information where you want them, but often there are dipmeters available which we can, in many cases, re-interpret to extract better dips than were provided by the original automated interpretation routines.



Deborah M. Olson, President  
Geologist/Log Analyst  
dmolson@payzoneinc.com  
661-747-0375

Find out how we can help you with  
your reservoir!  
See us at [www.payzoneinc.com](http://www.payzoneinc.com) or  
call us anytime

Tom Howard, Image Analyst  
tomh@payzoneinc.com  
832-407-2862

**2023-2024 Officers**

President	Amy Spaziani president@psaapg.org
President-Elect	Dan Seward president-elect@psaapg.org
Vice President	Vacant
Secretary	Kenton Crabtree secretary@psaapg.org
Treasurer	Lisa Alpert 310-351-6977 LAAlpert@aeraenergy.com treasurer@psaapg.org
Treasurer-Elect	Simmie Chehal 661-665-5738 SKChehal2@aeraenergy.com treasurer@psaapg.org
Past President	Kristy Whitaker
Editor-in-Chief	Tony Reid 661-303-7817 tonyr0209@gmail.com editor@psaapg.org
<b>Staff</b>	
Web Master	Mike Clark 661-378-8134 rocksniffer@aol.com
Membership Chair	Simmie Chehal 661-665-5738 SKChehal2@aeraenergy.com
Publications Chair	Larry Knauer 661-205-4463 laknauer@aol.com
Advisory Council Rep 2021-2024	Dan Schwartz 661-432-5407 dan.schwartz@driltek.com

**Contents**

<b>2</b>	<b>PS AAPG’s First Newsletter</b>	Reprinted from MP-36
<b>5</b>	<b>PS AAPG Officers, 2024-2025</b>	
<b>6</b>	<b>100th Anniversary Meeting and Field Trip, Whittier, Ca</b>	LABGS
<b>10</b>	<b>History of the Los Angeles Basin Geological Society, 1967-1985</b>	Doug Traxler
<b>11</b>	<b>SJGS Annual Fall Fiesta</b>	SJGS
<b>12</b>	<b>David M. Hite Obituary</b>	

---

**Editor’s Comments:** September 2024 marks 100 years since the founding of the Pacific Society of Petroleum Geologists in Los Angeles. Within a year, AAPG recognized the Pacific Section AAPG as the first of several Sections of the Association. It is fitting that the first activity to celebrate our society’s centennial should be in the LA Basin. The LABGS has put together an excellent program for the meeting in Whittier, including speakers, a field trip, and social events. Please plan on attending!

---

**Submit an Article to the Pacific Petroleum Newsletter!**

- CONTACT THE EDITOR at editor@PSAAPG.org
- Images (graphics, photos, and scans) must be at least 300 dpi resolution. Text should be at least 600 dpi.
- Scanned photos, illustrations (line art) or logos should preferably be submitted as a .tif, .gif, or .bmp; .jpeg

**Advertising Rates**

*New, Lowered Rates for Full, Half and Quarter Page Ads*

<i>Members</i>	<i>Single Issue</i>	<i>Year (6 issues)</i>
<i>Full Page</i>	<i>\$200.00</i>	<i>\$600.00</i>
<i>Half Page</i>	<i>\$125.00</i>	<i>\$400.00</i>
<i>Quarter Page</i>	<i>\$75.00</i>	<i>\$200.00</i>
<i>Business Card</i>		<i>\$100.00</i>

**Societies Free Advertising:**

*Convention: Unlimited Space in PSAAPG Newsletter*

## Pacific Section AAPG Officers for 2024-2025

Our search for candidates for open offices (President-Elect, Secretary, Treasurer-Elect and Editor-in-Chief) resulted in only one candidate: Dan Steward for President-Elect. As provided in the Constitution and By-laws, at the Executive Committee meeting of June 26, 2024, the Executive Committee appointed Dan as President-Elect, Kenton Crabtree as Secretary, Simmie Chehal as Treasurer-Elect, and Tony Reid as Editor-in-Chief. All appointees (except Dan) have served previously on the Executive Committee.



### President Elect: Dan Steward

Dan Steward, a native of Taft, California, has served as the LABGS president since September 2022. Dan's most recent role was as Amplify Energy's VP of Operations, covering the Beta Offshore production asset in San Pedro Bay. In prior roles, he participated in or supervised exploration across the deepwater Gulf of Mexico (U.S. and Mexico), west African continental margin (Sierra Leone, Cote d'Ivoire, Ghana, Equatorial Guinea, and Cameroon), the Black Sea, and the Barents Sea. Early-career exploration, production, and development assignments focused on the Bakersfield Arch, Point Arguello, Kern River, and Midway Sunset.



**President**  
**Amy Spaziani**  
 Spaziani  
 GeoServices  
 Previously PSAAPG  
 President-Elect



**Past President**  
**Kristy Whitaker**  
 Berry Corporation  
 Previously PSAAPG  
 President



**Treasurer-Elect**  
**Simmie Chehal**  
 Aera Energy  
 Previously PSAAPG  
 Treasurer



**Treasurer**  
**Lisa Alpert**  
 Aera Energy  
 Previously PSAAPG  
 Treasurer-elect



**Secretary**  
**Kenton Crabtree**  
 Previously PSAAGS  
 Secretary



**Editor-in-Chief**  
**Tony Reid**  
 Previously  
 PSAAPG Editor-in-  
 Chief

# ANNOUNCEMENT!

## from the Los Angeles Basin Geological Society

The Pacific Section of the AAPG's  
100<sup>th</sup> year of activity is upon us!

Sept. 13-15, 2024

Whittier College, Whittier, California

Friday Ice Breaker, Saturday Presentations and  
Dinner, Sunday Field Trip

Register at:

<https://cvent.me/gVZmrZ>

**Recommended Lodging:**

DoubleTree by Hilton Whittier Los Angeles  
7320 Greenleaf Ave, Whittier, California, 90602, USA

Doubletree by Hilton Hotel in  
Whittier, CA near Los Angeles

click box for hotel link

Please submit potential talk titles to Dan Steward  
([daniel@ironhorseenergy.com](mailto:daniel@ironhorseenergy.com)) and Rick Behl  
([richard.behl@csulb.edu](mailto:richard.behl@csulb.edu))

# 100th Anniversary Meeting and Field Trip

## September 13-15, 2024

### Whittier, California

#### GENERAL SCHEDULE:

#### Friday, September 13, 4PM-7PM

Icebreaker and reunion  
Whittier Brewing Company  
Food and drinks are available (self-pay)

#### Saturday, September 14, 9AM-5PM (Awards dinner to about 7PM)

Whittier College

Presentations on the general theme of history, development and contributions of petroleum geology and geologists in the Pacific Section.

Sharing (items and mini-posters) of geological artifacts of interest (to share photos, contact Simmie Chehal at [treasurer@psaapg.org](mailto:treasurer@psaapg.org) for uploading instructions)

Lunch on your own during break in Whittier

Dinner and Awards ceremony, 5-7PM. (included with registration)

#### Sunday, September 15, 9AM- ~2PM.

Whittier-Puente Hills trend and petroleum systems field trip  
Lunch (included with registration) at Olinda Oil Museum.  
Mode of transportation to be arranged after we learn the number of participants.

#### SATURDAY PRESENTATIONS (as of July 30):

Conflicting opinions on the potential for petroleum in California in the mid-1800's: Thomas Antisell and Josiah Whitney.  
Stephen M. Testa (Testa Environmental Corporation and President, Petroleum History Institute).

History of the Pacific Section AAPG.  
Daniel C. Steward (President LA Basin Geological Society).



Karla Tucker pointing at an overturned limb on the hanging wall of the Whittier Fault System. Location is just off the Olinda Oil Museum Trail.

Oil in Southern California, 19th century to the present: From grit to success.

Robert (Dan) Francis (Professor Emeritus CSU Long Beach and author: *Black Gold in California: The Story of the California Petroleum Industry*).

History of exploration and petroleum development in the San Joaquin basin.

Tony Reid (PSAAPG Editor-in-Chief and California Resources Corporation, retired)

The benthic foraminiferal stages of California: a virtual field trip of type localities and development history

Richard Behl (Professor Emeritus CSU Long Beach) and Gregg Blake (Consultant, former Unocal and Murphy Oil, former head of Unocal's Biostratigraphy group for California)

144 Years and Counting: The Discovery, Development, and Ongoing Operations at the Brea-Olinda Oil Field.

Ben Davidson (Petroleum Geologist, Bridge Energy) and Dan Steward (President LA Basin Geological Society).

Basement structure and control of petroleum-producing structures in the Los Angeles Basin.

Marc Kamerling (Consultant, former Arco Exploration and Venoco)

History of exploration and development of the offshore Ventura-Santa Barbara basin with emphasis on the Santa Ynez Unit.

Dalton Lockman (Consultant, former Exxon-Mobil, Plains Petroleum, and Freeport McMoRan).

### **PUENTE HILLS FIELD TRIP, Sept. 15, 2024; 9AM to ~ 2PM**

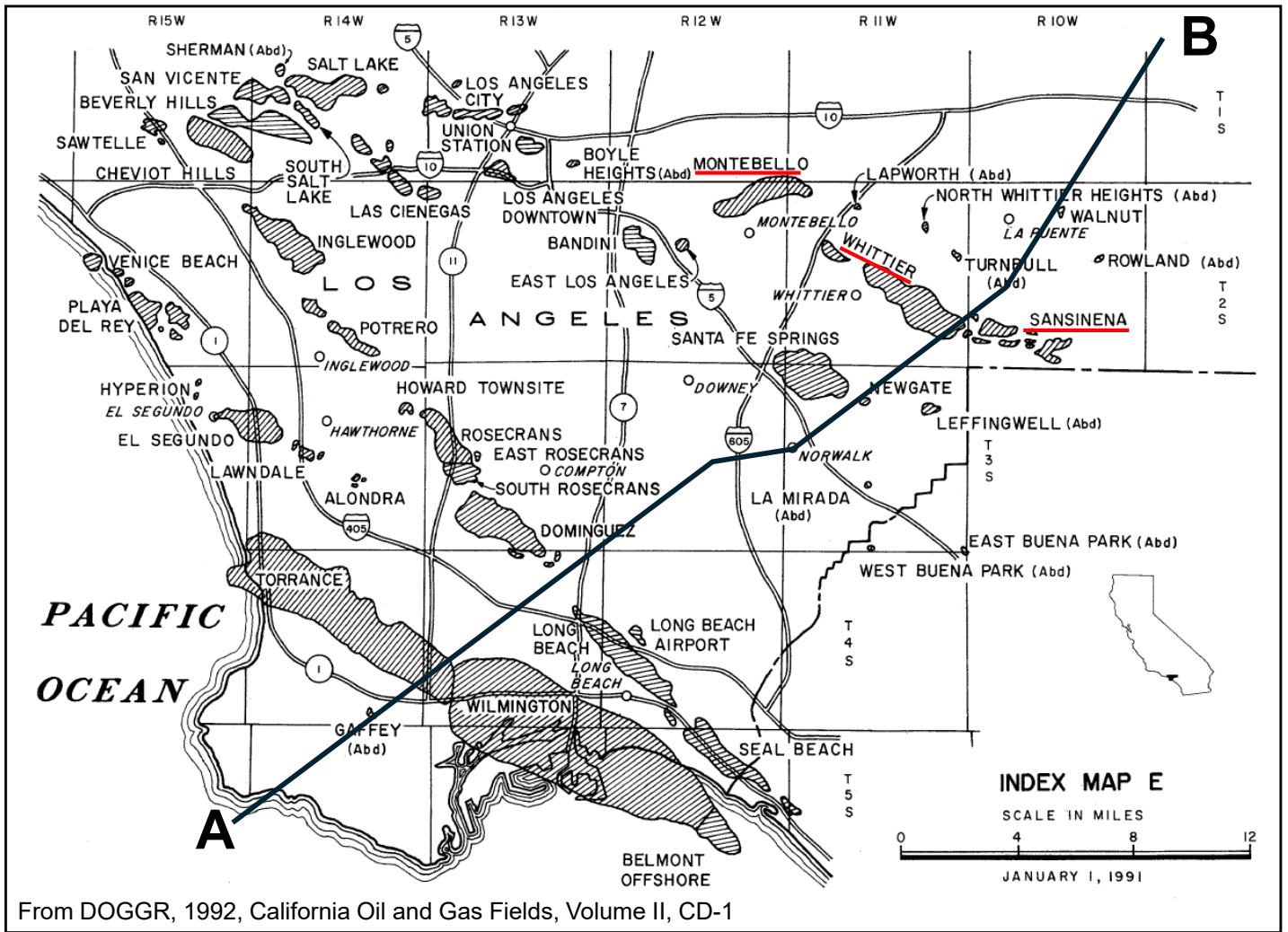
The Los Angeles Basin Geological Society, in celebration of the 100th anniversary of the Pacific Section AAPG, will host a fieldtrip to examine key components of the basin's petroleum system, as exposed in the Puente Hills trend of southern California.

The Los Angeles Basin (LAB) is the most productive petroliferous basin in the world per volume or surface area. The four members of the Miocene Puente Formation, in ascending order: La Vida, Soquel, Yorba, and Sycamore Canyon, comprise >8,900' of stacked source and reservoir in oil fields along the north-dipping dip-slip/reverse Whittier Fault Zone, and a much greater stratigraphic thickness exists in the basin-center. This succession represents the principal phase of subsidence and deep marine sedimentation in the LAB. A northern and eastern igneous provenance fed a set of submarine fan complexes in the southern San Gabriel Valley, across what would become the Whittier Fault System and the Puente Hills, into the Fullerton Embayment and thence into the LAB proper. Water depth during deposition was greater than 3,000', with accommodation space exceeding available sediment flux, a condition not overcome until post-Miocene sediment delivery gradually filled the basin.

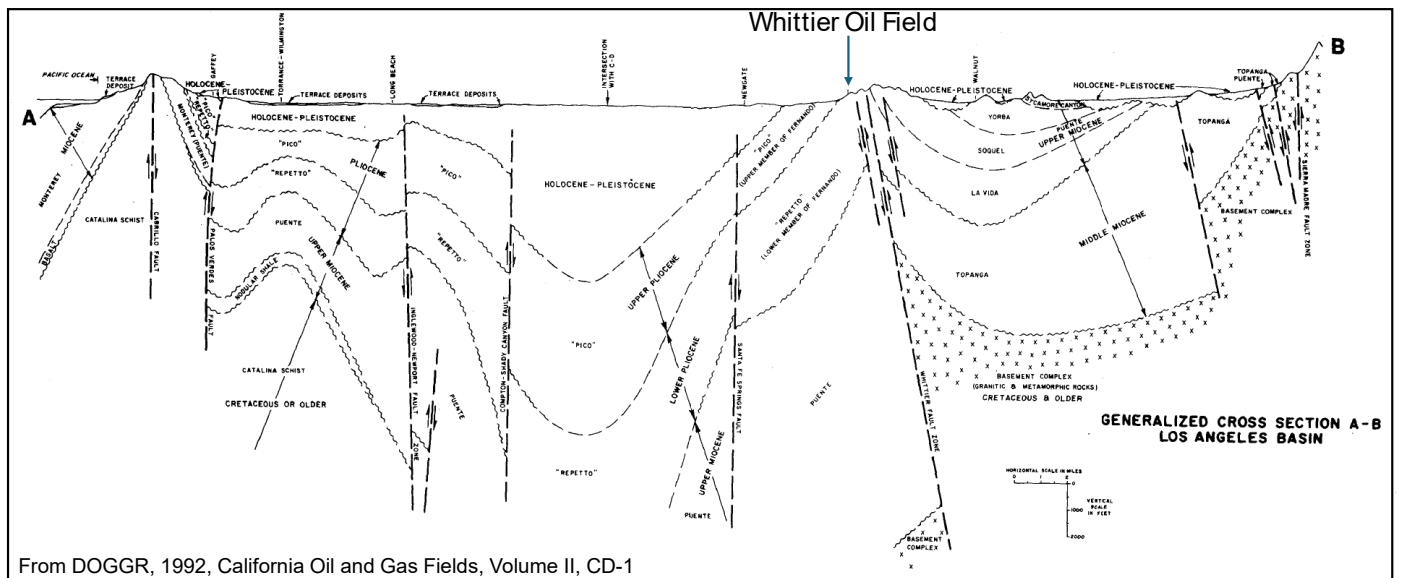
A striking feature of the Puente Fm. is its source-rock-to-reservoir rock capability: the organic rich mudstones, deeply buried in the LAB, generated hydrocarbons which migrated updip and along faults, then became trapped in tectonically active and complex structural and stratigraphic geometries, with the Sycamore Canyon and Pliocene Fernando Formation serving as the principal reservoirs of the Brea-Olinda, Sansinena, and Whittier fields (425MM cumulative oil). The field trip will examine exposures of the La Vida and Soquel source rocks, the Sycamore Canyon sandstones, and will include impressive examples of active tectonism relating to the Brea-Olinda oil field and the hanging wall structure of the Whittier Fault System, among other compelling features.



# Los Angeles Basin Oil Fields, Los Angeles County Area



## Los Angeles Basin Cross Section



# Los Angeles Basin Geological Society

by  
**Doug Traxler**

Ted Bear, President of the Pacific Section AAPG appointed Doug Traxler, Signal and Tom Baldwin, Humble, to investigate and report on the establishment of a Los Angeles Basin Geological Society during July, 1967.

The first LABGS meeting was held on October 19, 1967, hosted by Standard Oil Company at their Northam Recreation Hall in La Mirada. Official affiliation of the LABGS was approved at the Pacific Section Executive Committee meeting held November 16, 1967. The following appointments were made: Doug Traxler, Chairman; Russ Simonson, Downtown Rep. ; Al Escalante, East Basin Rep. ; Frank Parker, Pasadena Rep. ; Bruce Barron, South Basin Rep. ; Rex Smith, W. L.A. Rep. ; and Rod Colvin, Finance Rep.

The Los Angeles plan to combine the monthly Pacific Section evening meetings with a BBQ Dinner was a resounding success. In the past, meetings held in downtown Los Angeles often suffered an embarrassing lack of attendance. Attendees have expressed considerable enthusiasm for the opportunity to fraternize and partake in the activities presented at the BBQ's.

With the subsequent closing of Chevron's Northern Station, the evening BBQ's have been replaced with monthly luncheon at Taix's Restaurant on Sunset Blvd. Since the mid-1970's the Society has invited geology students from nearby colleges to their luncheons. And once a year, presentations by geology graduate students are featured at these luncheons.

## Past Chairmen

1967-68	Doug Traxler
1969	Tom Redin

Text reprinted from C. F. Green, ed., 1985, 62 years history of the Pacific Section American Association of Petroleum Geologists, publication MP 36.

## Past Presidents

1970	John H. Marshall/Donald E. Hallinger
1971	Orville D. Hart
1972	R. W. Wagner
1975	Louis Heintz
1975	James M. Gibson
1976	Robert A. Davis Jr.
1977	Bruce Barron
1978	Lee Weismeyer Jr.
1979	Russ Robinson
1980	Donald E. Hallinger
1981	Lucy Birdsall
1982	Keith Yenne
1983	Bonnie Bloesser-Cooper
1984	Jim Blankenship
1985	Marty Hall-Burr



Karla Tucker and Rick Behl at an excellent exposure of Sycamore Canyon member sandstone in Turnbull Canyon, Puente Hills

SAN JOAQUIN GEOLOGICAL SOCIETY'S  
**SCHOLARSHIP  
FUNDRAISER!**

**FALL  
FIESTA**



**SEPTEMBER 20<sup>th</sup>**

**5:30 - 8:30 pm**

Location to be  
sent to  
registrants



**FAMILY FRIENDLY EVENT! GAMES FOR THE KIDS! RAFFLES!**



**\$35** FOR MEMBERS **\$40** FOR NON-MEMBERS

**\$20** FOR STUDENTS AND CHILDREN 4 YEARS AND OLDER

**FREE** FOR CHILDREN 3 YEARS AND YOUNGER

**DONATIONS** WILL BENEFIT THE STUDENT SCHOLARSHIP FUND

REGISTER AND/OR DONATE ONLINE AT:  
**SANJOAQUINGEOLOGICALSOCIETY.ORG** OR SCAN THE QR CODE!

## David M. Hite Obituary

David M. Hite passed away in January 2024 in Bend, Oregon. He was 84 years old. At an early age he was deeply interested in the sciences, especially geology. David earned his undergraduate degree in Geology from Oregon State University and his MS and Ph.D. degrees in Geology from the University of Wisconsin - Madison. David's geologic area of greatest interest was sedimentology and basin analysis.

Upon completing his Ph.D. in 1967, Dr. Hite went to work for ARCO (formerly Atlantic Richfield Company) in their research laboratory at Plano, Texas. Here he was quickly recognized as a fine geologist but also a gregarious and fun-loving man. These attributes were utilized in later years by the company in selecting him to lead the company's college recruiting efforts for new geologists and managing the training program for new recruits. This program was designed to ensure that the new recruits were exposed to the concepts used in the field of petroleum geology. David personally led field trips to teach the skills necessary to be an effective petroleum geologist.



Whether in his customary professorial tweeds or rugged field wear, David had great physical presence and could usually be found with his signature pipe both indoors and out. The pipe would exude clouds of aromatic smoke as he lectured or pointed out interesting outcrop features in his deep, sonorous voice.

While working at ARCO's Plano, Texas lab David did field work in the Canadian Arctic Islands, Alaska, California, and the Rocky Mountains. Directly after the discovery of Prudhoe Bay in 1967, he was sent to the Brooks Range to learn more about the Sadlerochit formation, which is the primary producing zone at Prudhoe Bay. Months of effort in the mountains revealed the stratigraphy and sedimentology of the unit. This knowledge was essential in planning the production of this fourteen-billion-barrel field.

In 1979 David was transferred to ARCO's Alaska office as District Geologist for northern Alaska. Initially he was assigned to the North Slope. Shortly thereafter he was given the title of Province Exploration Manager for the Bering Sea, a previously unexplored area with no prior drilling. Here he was chairman of the COST well program that had twenty-two participating companies. In that role David also interacted with both the indigenous villages along the coast and various Federal agencies through the initial phases of the project. Subsequently, he managed ARCO's exploration program in the Bering Sea. Following this assignment he was named Exploration Manager for the Lafayette, Louisiana office. He was later transferred back to Anchorage where he served as manager of the newly formed Geoscience Operations Group, which was staffed by a variety of highly skilled geoscientists assisting exploration groups in Alaska. He then managed another newly formed group called the ANWR (Arctic National Wildlife Refuge) Evaluation group. This group's assignment was to reevaluate ARCO's understanding of the area's geology. In 1992 David retired from ARCO and began his work as an independent consulting geologist. In this capacity, he consulted for major oil and gas companies doing work in Alaska as well as independents and energy utilities. He also consulted for a number of State and Federal agencies and Alaska Native Corporations evaluating their respective subsurface potential.

David served as a member of the National Academy of Sciences Polar Research Board. and was a member of the National Research Council Committee on the cumulative environmental effects of oil and gas activities on Alaska's North Slope. David was co-editor/author of AAPG Volume 104 on the oil and gas fields of the Cook Inlet Basin, Alaska. He was also active in the Alaska Geological Society serving a term as President as well as Chairman of two conventions.



# BEST CORE SERVICES

*where BETTER became BEST*

*We Supply Quality Data with Quality Service*

111 LAKE STREET  
BAKERSFIELD CA 93305

*Bryan Bell: (661) 496-2654*

*Office: (661) 835-6001*



*home movies to dvd,  
photo gifts,  
restorations  
& more*



2001 F St. Ste102  
(661) 322-5552  
digitalcr1@gmail.com



digital.creations.bakersfield

**New Publication from the  
Pacific Section AAPG**

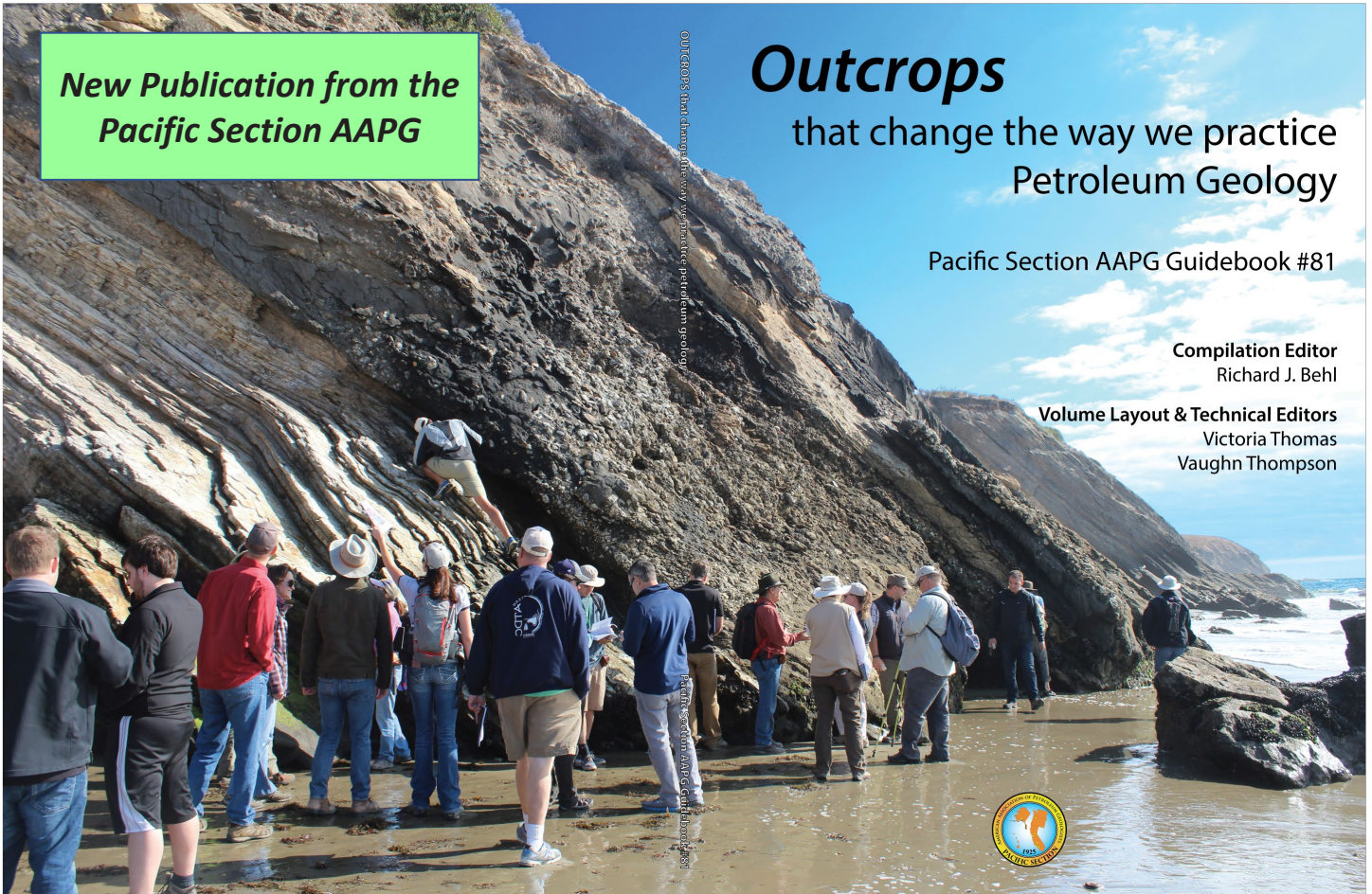
# Outcrops

that change the way we practice  
Petroleum Geology

Pacific Section AAPG Guidebook #81

**Compilation Editor**  
Richard J. Behl

**Volume Layout & Technical Editors**  
Victoria Thomas  
Vaughn Thompson



**GEOLOGICAL LOGGING INC.**  
9229 Beatty Drive, Suite B  
Sacramento, CA 95826  
(916) 452-9570 Tel  
(408) 307-4653 Cell  
(916) 452-9573 Fax  
david@geologinc.net

**DAVID BURROUGHS**  
President

[www.geologinc.net](http://www.geologinc.net)

Guidebook #81 is available for purchase NOW

Cost: \$36.00

PUBLICATIONS  
PACIFIC SECTION AAPG  
P. O. BOX 1072  
BAKERSFIELD, CA 93302

Please include an additional \$8.00 for S&H.  
All orders must be prepaid.

## PAYZONE INC.

*Geological, Geophysical, and Petrophysical Consulting Services for the Petroleum Industry* 661-387-1715

- Accurate, consistent fieldwide reservoir properties for modeling, OIP, and improved heat management in thermal projects
- Old E-Log interpretation

- Image log interpretation and integration with petro-physical analysis
- 2D/3D seismic interpretation, expertise in old 2D data
- "Mystery logs" and other difficult log problems

Our petrophysical models for siliceous shales and California sands are based on over 30 years of experience with these rocks, including core, log, and lithology data from every basin in the state

Deborah Olson, President  
dolson@payzoneinc.com  
661-747-0375

**Have a log question? Give us a call!**

[www.payzoneinc.com](http://www.payzoneinc.com)

Tom Howard, Image Analyst  
tomh@payzoneinc.com  
832-407-2862